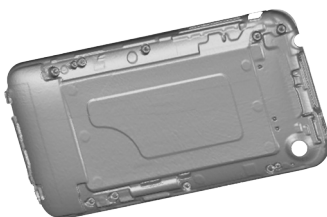
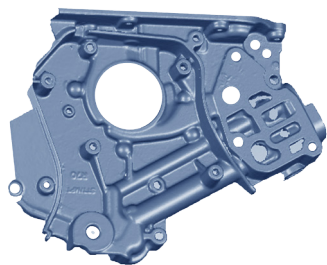


ENHANCED 2MP EScan

Standard Base



3D Scanning Made Simple



EScan Components

- **Laser Stripe Generator:** 15 deg , 30 deg
- **Laser Power/Class:** At 100 mm distance according to CDRH: 5 mW / 1mW - Class 1
- **Laser Exposure:** Hardware and software limits for laser exposure time
- **Line Length:** 4.5" (115 mm) @ 7" (170mm)
- **Minimum Operating Distance:** 6" (150 mm)
- **Scan Sweep (X):** 4" (100 mm) when object is 6" (150mm) from scanner and 8" (200mm) sweep when object is 10" (250 mm) from scanner

EScan Applications

- **Small Range scanning.** Small size objects. Best suited for objects inside 1 cubic ft volume
- **Scanner is very versatile.** There are no limits to positioning. You can scan vertically, horizontally, and angled at any degree to create a complete 3D image of the physical object.
- **Custom scanning configurations** with 1 or more scanners can be made available depending on customer's needs.
- **Affordable choice for 3D imaging.** With 2 million points per scan.
- **Markets**
 - * Reverse Engineering (automotive, aerospace, packaging, electronics, vacuum form molds, injection mold)
 - * Dental
 - * Design & Machining
 - * Inspection
 - * Animation
- **Mobile with Battery Pack:** Easy to Transport

EScan Specifications

- **Resolution:** .001" (50 microns)
- **Point Density:** 1920 points per stripe
- **Depth of Field:** 4" - 8" (100-200mm)
- **Accuracy (X,Y):** .0015" (28 microns) @ 7" (170mm)
- **Scanner Resolution:** 1 x 2,000,000 (2MP sensor)
- **Scan Area (X,Y):** 6" (150mm) x 4" (100mm)
- **Size:** 9" x 8" x 4" (225mm x 200mm x 100mm)
- **Weight:** 5.3 lbs / 2.4 kg
- **Export Formats:** STL, OBJ, 3DS, Ascii

* 0.001" = 25 microns
Specifications subject to change without notice.



3D digital corp

Global Leader in 3D Scanner Technology

3ddigitalcorp.com

 **TECH-LABS**
www.tech-labs.com
1-800-445-1088